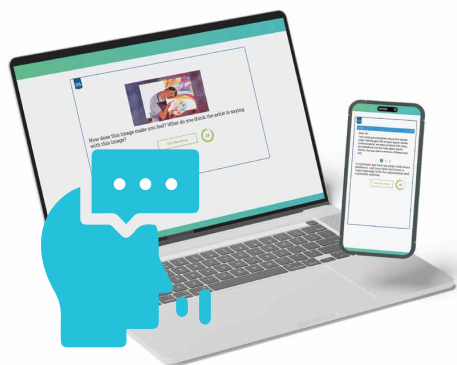


DYNAMIC
SPEAKING
TEST



NEW AI-graded speaking test



The Dynamic Speaking Test delivers detailed CEFR-based reports on your test takers' speaking ability through automated, AI-powered grading. The output has been statistically calibrated against a panel of experienced human markers, so you can be sure your test results are accurate and reliable. And all at an affordable price!



Instant

Pinpoint a test taker's CEFR speaking level in just 15 minutes. It's quick and easy to set up and deploy, and runs on laptop, tablet or mobile.



Accurate and reliable

This test combines the power of an AI algorithm trained on millions of data points with experienced, professional test design from telc, Europe's leading provider of language assessment.

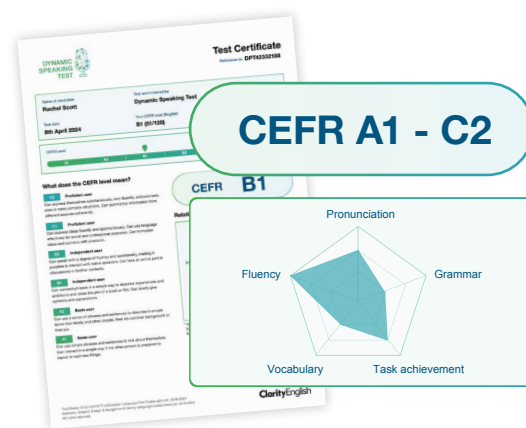


Detailed results

The output is a holistic view of the speaker's ability: where they are located within their CEFR level, and gives an overview of strengths and weaknesses.

What's special about the Dynamic Speaking Test?

- Designed by linguists
- Powered by AI
- Detailed results delivered
- Authentic, real-world approach
- Randomised questions



Contact us for a live demonstration, to try it out in your institution
– or just for a chat about any aspect of the test.

 <https://dynamicspeakingtest.com/>

Winhoe Company Ltd

Ms Kima Huang

+886 4 2451 8175

info@winhoe.com

ClarityEnglish telc 達能英檢
LANGUAGE TESTS