




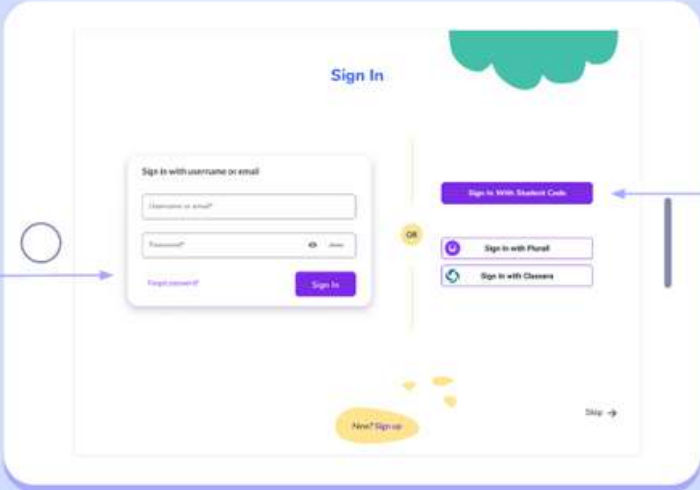
# 登入方式

**Login with a Student Code**

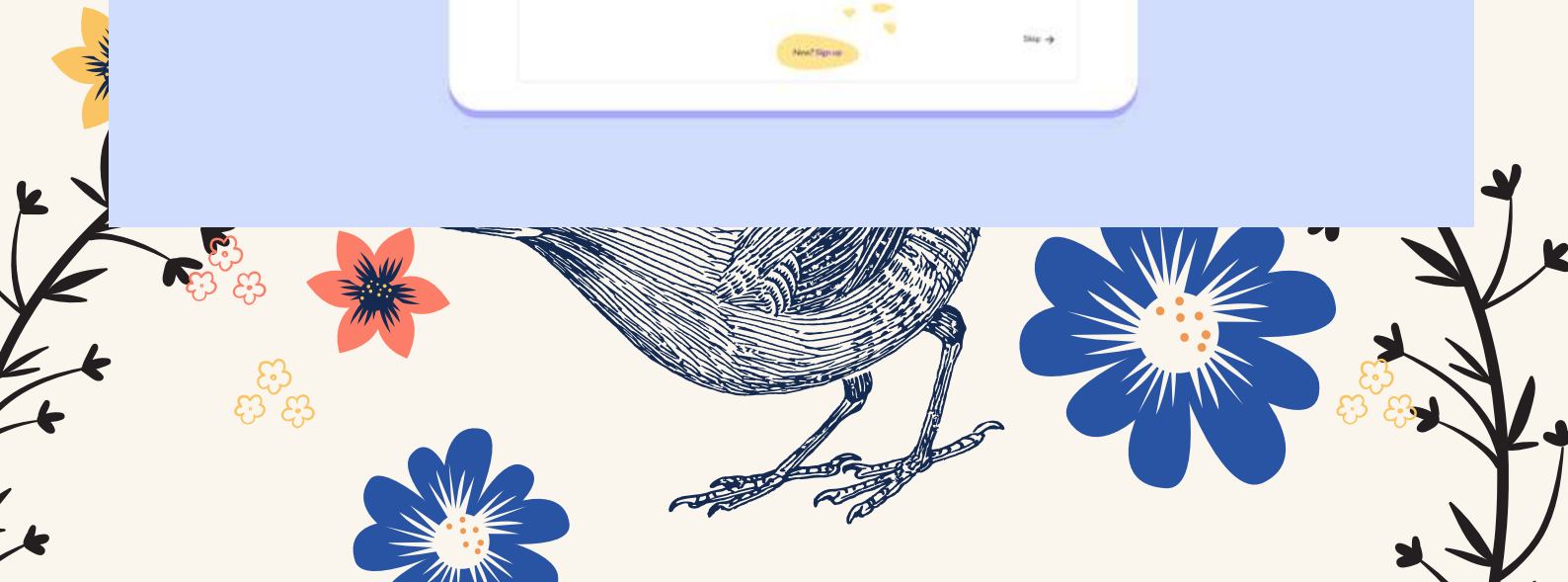


Parents and Teachers can log in with the email address and password they used during registration.

For more information go to [page 29](#).

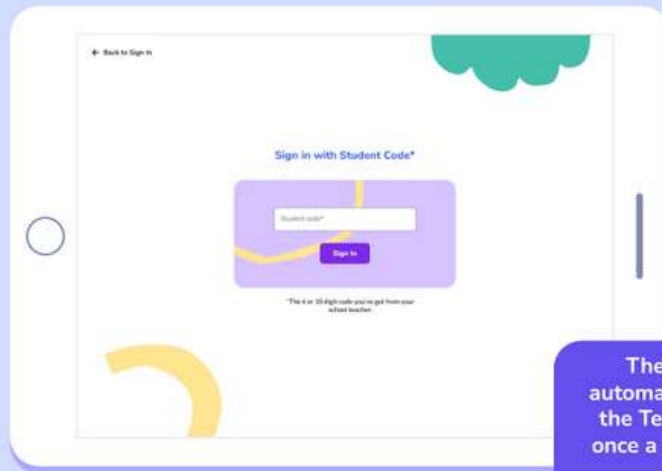


Students can log in with their individual 10-digit student code.

The screenshot shows a "Sign In" page with two main sections. The left section is titled "Sign in with username or email" and contains fields for "Username or email?" and "Password?". Below these fields is a "Sign In" button. The right section is titled "Sign in with Student Code" and contains a "Sign In with Student Code" button. Below this button are two other options: "Sign in with Floral" and "Sign in with Classroom". A blue arrow points from the text on the right to the "Sign In with Student Code" button. Another blue arrow points from the text on the left to the "Sign In" button. The "Sign In" page also has a "New? Sign up" link at the bottom and a "Skip" link at the bottom right.

## Login with a Student Code

BOOKR  
CLASS



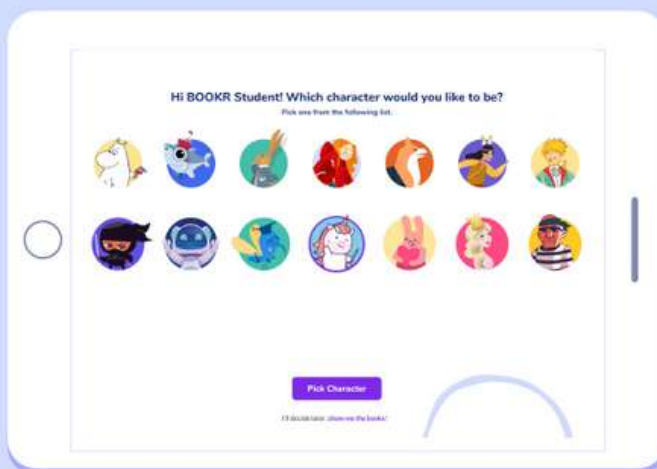
**i**  
The student code is automatically generated in the Teacher's Dashboard once a student is added to the school.

# 登入方式 選取圖像使用

## First Login | Step 1 - Select your Avatar

BOOKR  
CLASS

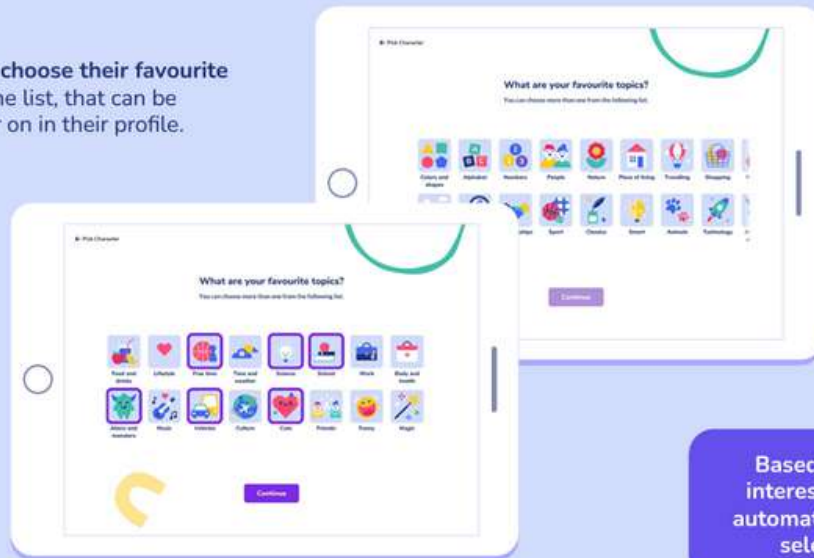
When students log in for the first time, they can choose an avatar as a profile picture, which they can modify later on.



## First Login | Step 2 - Choose your Interests

BOOKR  
CLASS

Students can choose their favourite topics from the list, that can be changed later on in their profile.



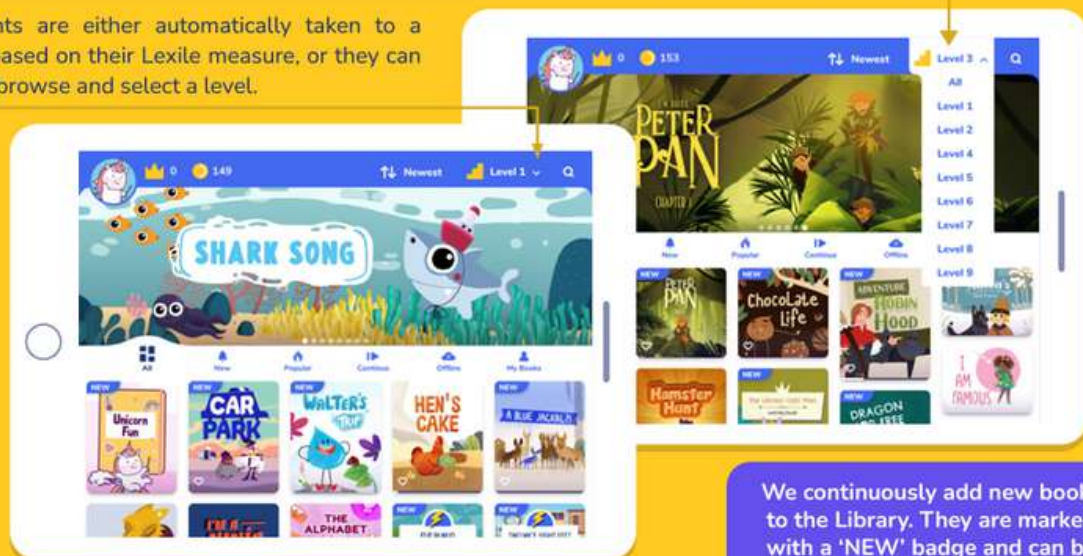
Based on their selected interests, the system will automatically recommend a selection of books.

## 選擇興趣後開始閱讀

## Library view | Students | Main Page

BOOKR  
CLASS

Students are either automatically taken to a level based on their Lexile measure, or they can freely browse and select a level.



We continuously add new books to the Library. They are marked with a 'NEW' badge and can be found under the 'New' filter.